

PRODUCT DATA SHEET



BOUNCE BLK LOW S3S ESD FO HRO SR

Art. No 64.705.0



- Protection:** composite-fiberglass toe cap and flexible FAP[®] midsole
- Plus:** cushioning idCell element integrated in the heel area
- Upper:** easy-clean durable water-resistant microfibre, resistant to cleaning detergent, animal fat and acid
- Lining:** BreathActive functional lining
- Footbed:** evercushion[®] MAX
- Sole:** GRIPPAZ[®] Traction outsole with specially formulated rubber compound for excellent slip resistance
- Colour:** black
- Sizes:** 35 – 48

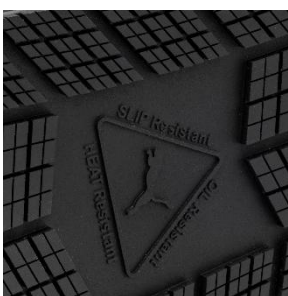
Also available:



BLAST ST BLK LOW
647020



SPARK ST BLK LOW
647060



GRIPPAZ[®] TRACTION OUTSOLE

Step confidently with GRIPPAZ[®] Traction Outsole Technology*. Formulated from a specially slip-resistant rubber Compound. It delivers excellent traction every step of the way.
*All shoes with GRIPPAZ[®] Traction significantly exceed the european EN 20347:2022 SR Standard



EVERCUSHION[®] MAX

Maximum comfort and a perfect fit thanks to the cushioning, breathable and moisture regulating evercushion[®] MAX footbed. The textile surface is not only non-slip, but also has an antibacterial HYPRO ODOR CONTROL treatment that reliably combats unpleasant odors. The foot receives perfect support from the longitudinal arch support. Pressure points are reduced and stress on feet, ankles and knees is minimized. Support you need for your best performance at work.



idCELL

Die idCELL Elemente im Fersen- und Vorderfußbereich bestehen aus sehr leichtem, geschäumten EVA und absorbieren optimal Schläge und Stöße beim Aufsetzen des Fußes.