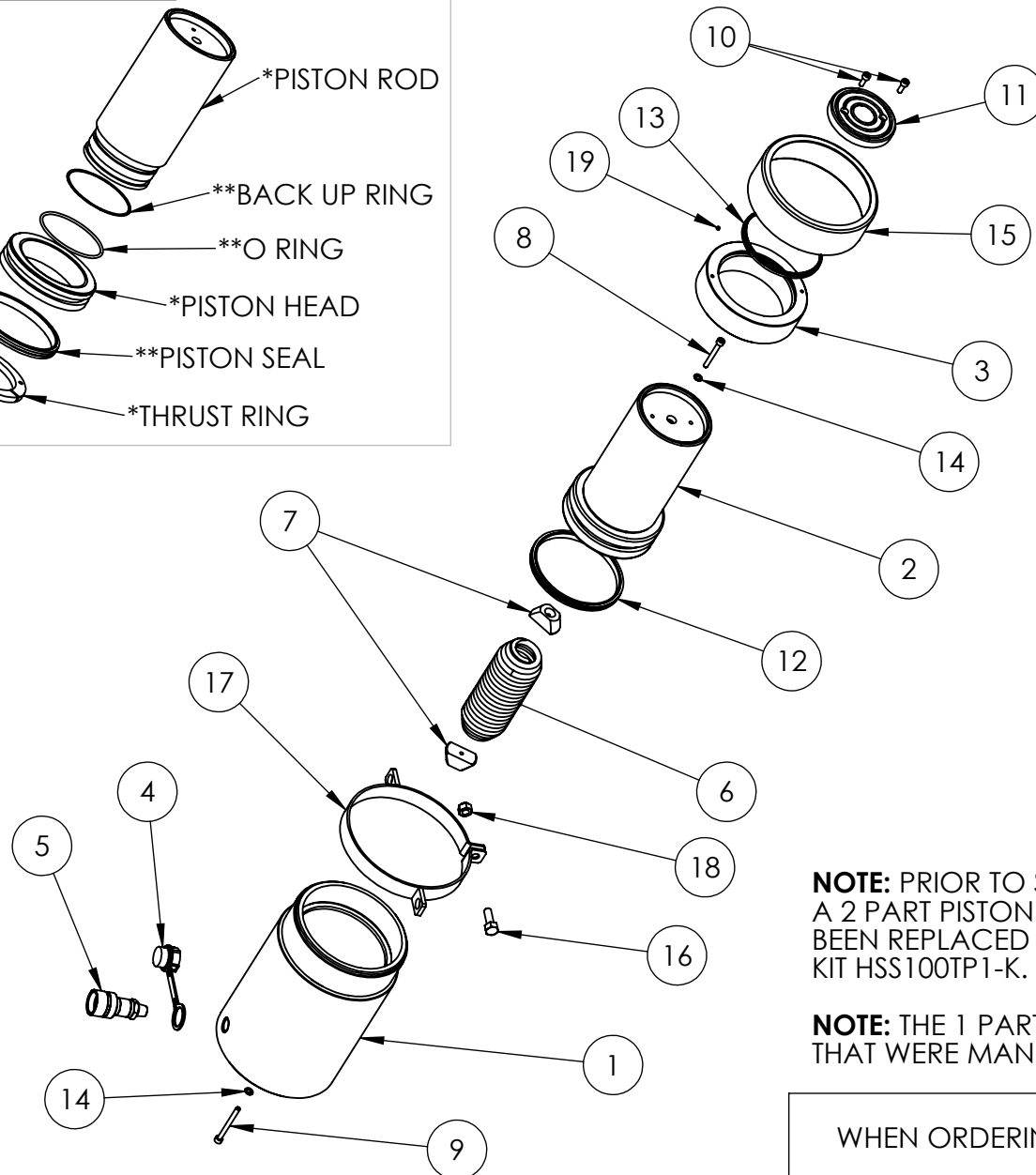
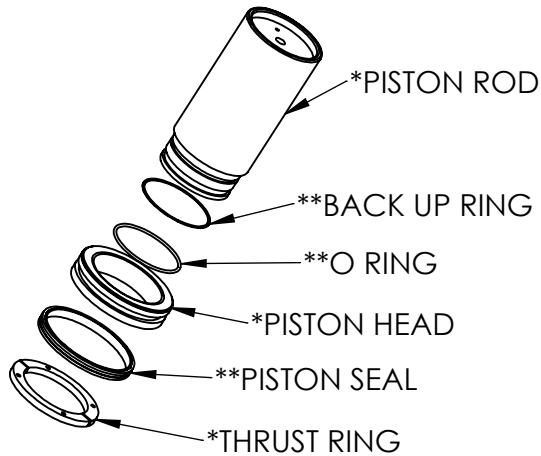


FIG 1. 2 PART PISTON



FROM SERIAL NO: AX5176 ONWARDS

ITEM NO.	PART NUMBER	DESCRIPTION	QTY.
1	CBC140SG003	CYLINDER	1
2	PRC140BL001	PISTON	1
3	SRC114WN003	STOP RING	1
4	PPC1	DUST COVER	1
5	CF1	COUPLER	1
6	SPC067UP001	TENSION SPRING	1
7	SIC035ED001	SPRING INSERT	2
8	BLC006JC50	SOCKET CAP HD SCREW	1
9	BLC006JD065	SOCKET CAP HD SCREW	1
10	BLC006JD016	SOCKET CAP HD SCREW	2
11	HA100	SADDLE	1
12	X	PISTON SEAL	1
13	X	WIPER	1
14	X	WASHER	2
15	PTP175TP100	THREAD PROTECTOR	1
16	BLC010LB030	BOLT	1
17	FLC178LA003	LIFTING RING	1
18	NUC010LC000	NUT	1
19	FFC004RC001	FILTER	1

ALL ITEMS MARKED 'X' SUPPLIED IN SERVICE KIT HSS100TP2-K

NOTE: PRIOR TO SERIAL NO. AX5176 THE CYLINDERS WERE MANUFACTURED WITH A 2 PART PISTON (FIG 1). PARTS MARKED * ARE NOT AVAILABLE, THESE PARTS HAVE BEEN REPLACED BY ITEM NO. 2. PARTS MARKED UP ** ARE AVAILABLE IN SERVICE KIT HSS100TP1-K.

NOTE: THE 1 PART PISTON DESIGN IS FULLY INTERCHANGEABLE WITH THE CYLINDERS THAT WERE MANUFACTURED WITH A 2 PART PISTON.

IMPORTANT

WHEN ORDERING SPARES YOU MUST STATE THE FULL PART NUMBER AND THE PRODUCT SERIAL NUMBER - FROM THE LABEL TO PROTECT YOUR WARRANTY ALWAYS USE GENUINE HI-FORCE PARTS.