

PRODUCT DATA SHEET



VANTI GREY LOW S1PS ESD FO HRO SR

Art. No. 64.37.00



Protection: Fiberglass, metal free toe cap and flexible FAP® midsole

Plus: ESD, non-metallic, toe cap protection, heel support

Upper: Sandwich-Mesh with durable microfiber

Lining: BreathActive functional lining

Footbed: evercushion® BA

Sole: rubber sole MOTION IMPULSE - 300°C heat and slip-resistant rubber outsole with IMPULSE.FOAM® midsole in two different densities for maximum cushioning, stability and comfort

Colour: grey

Sizes: 39 - 48

Also available:



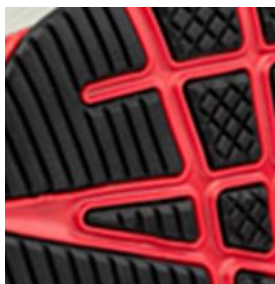
PACE 2.0 YELLOW LOW
643800



FUSE MOTION 2.0 RED LOW
643890

RUBBER SOLE MOTION

The 300°C heat resistant HRO rubber outsole is inspired by the latest running shoe technology. The anti-slip sole profile with its diagonal flex grooves ensures optimum flexibility and maximum traction (SRC).



TORSION CONTROL ELEMENT

The TPU torsion control element in the middle of the sole supports the natural flexing action of the foot while walking and provides a better support and stability for the feet.



IMPULSE.FOAM® midsole

Ultimate comfort during long working days. The innovative IMPULSE.FOAM® midsole in two different densities reacts to each of your steps with an energy impulse. Thereby the IMPULSE.FOAM® does not only return the energy, but also provides maximum cushioning and excellent stability.



UPPER

The light textile fabric is particularly robust, tear-resistant and breathable. The TPU strengthening elements offer a high stability and resistance. They set new accents in functionality and design.

