



# QJ 319 N2MA Four-point contact ball bearing with locating slots

## Four-point contact ball bearing with locating slots

Four-point contact ball bearings with locating slots can accommodate high axial loads in both directions and small radial loads. They can operate at very high speeds and are more suitable than deep groove ball bearings for supporting large axial forces. The outer ring, with ball and cage assembly, can be mounted separately from the two inner ring halves. The locating slots can be used to prevent the outer ring from rotating.

- High-speed capability
- Accommodate high axial loads in both directions and small radial loads
- Require considerably less axial space than double row angular contact ball bearings
- The locating slots can be used to prevent the outer ring from rotating

## Overview

### Dimensions

Bore diameter	95 mm
Outside diameter	200 mm
Width	45 mm
Contact angle	35 °

### Performance

Basic dynamic load rating	305 kN
Basic static load rating	340 kN
Limiting speed	6 000 r/min
SKF performance class	SKF Explorer

### Properties

Contact type	Four-point contact
Number of rows	1
Locating feature, bearing outer ring	Locating slot
Ring type	Two-piece inner ring and one-piece outer ring
Cage	Machined metal
Matched arrangement	No
Universal matching bearing	No

Axial internal clearance	CN
Material, bearing	Bearing steel
Coating	Without
Sealing	Without
Lubricant	None
Relubrication feature	Without

# Technical Specification

SKF performance class

SKF Explorer

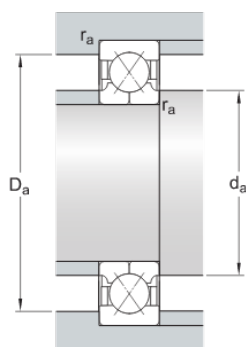


## Dimensions

d	95 mm	Bore diameter
D	200 mm	Outside diameter
B	45 mm	Width
$d_1$	≈ 131 mm	Shoulder diameter inner ring
$D_1$	≈ 165 mm	Shoulder diameter outer ring/ inner diameter housing washer
a	103 mm	Distance pressure point(s)
h	11.7 mm	Locating slot depth outer ring
b	10.5 mm	Locating slot width outer ring
$r_0$	2 mm	Corner radius locating slot
$r_{1,2}$	min. 3 mm	Chamfer dimension inner ring

## Abutment dimensions

$d_a$	min. 109 mm	Abutment diameter shaft
$D_a$	max. 186 mm	Abutment diameter housing
$r_a$	max. 2.5 mm	Fillet radius



## Calculation data

Basic dynamic load rating	C	305 kN
Basic static load rating	C <sub>0</sub>	340 kN
Fatigue load limit	P <sub>u</sub>	11.8 kN
Limiting speed		6 000 r/min
Calculation factor	A	0.317
Limiting value	e	0.95
Calculation factor	X	0.6
Calculation factor	Y <sub>0</sub>	0.58
Calculation factor	Y <sub>1</sub>	0.66
Calculation factor	Y <sub>2</sub>	1.07

## Mass

Mass bearing	7.45 kg
--------------	---------

# Terms and conditions

By accessing and using this website / app owned and published by AB SKF (publ.) (556007-3495 · Gothenburg) ("SKF"), you agree to the following terms and conditions:

## Warranty Disclaimer and Limitation of Liability

Although every care has been taken to assure the accuracy of the information on this website / app, SKF provides this information "AS IS" and DISCLAIMS ALL WARRANTIES, EXPRESS OR IMPLIED, INCLUDING, BUT NOT LIMITED TO, IMPLIED WARRANTIES OF MERCHANTABILITY AND FITNESS FOR A PARTICULAR PURPOSE. You acknowledge that your use of this website / app is at your sole risk, that you assume full responsibility for all costs associated with use of this website / app, and that SKF shall not be liable for any direct, incidental, consequential, or indirect damages of any kind arising out of your access to, or use of the information or software made available on this website / app. Any warranties and representations in this website / app for SKF products or services that you purchase or use will be subject to the agreed upon terms and conditions in the contract for such product or service. Further, for non-SKF websites / apps that are referenced in our website / app or where a hyperlink appears, SKF makes no warranties concerning the accuracy or reliability of the information in these websites / apps and assumes no responsibility for material created or published by third parties contained therein. In addition, SKF does not warrant that this website / app or these other linked websites / apps are free from viruses or other harmful elements.

## Third Party Services

When viewing YouTube content via the SKF website(s) (i.e. using YouTube API Services), you agree to be bound by the YouTube Terms of Service.

## Copyright

Copyright in this website / app copyright of the information and software made available on this website / app rest with SKF or its licensors. All rights are reserved. All licensed material will reference the licensor that has granted SKF the right to use the material. The information and software made available on this website / app may not be reproduced, duplicated, copied, transferred, distributed, stored, modified, downloaded or otherwise exploited for any commercial use without the prior written approval of SKF. However, it may be reproduced, stored and downloaded for use by individuals without prior written approval of SKF. Under no circumstances may this information or software be supplied to third parties.

This website /app includes certain images used under license from Shutterstock, Inc.

## Trademarks and Patents

All trademarks, brand names, and corporate logos displayed on the website / app are the property of SKF or its licensors, and may not be used in any way without prior written approval by SKF. All licensed trademarks published on this website / app reference the licensor that has granted SKF the right to use the trademark. Access to this website / app does not grant to the user any license under any patents owned by or licensed to SKF.

## Changes

SKF reserves the right to make changes or additions to this website / app at any time.