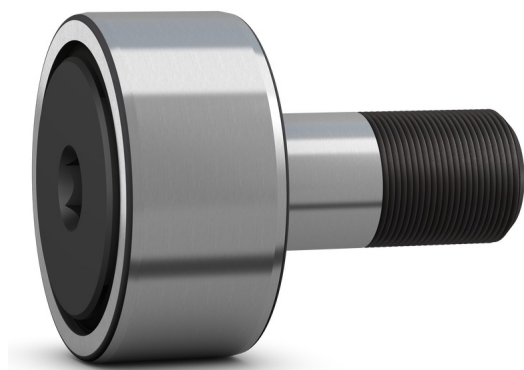


KR 22 PPXCam follower (stud-type track roller) with integral sealing and relubrication feature

Cam follower (stud-type track roller) with integral sealing and relubrication feature

Cam followers (stud-type track rollers) are designed to run on all types of tracks and to be used in cam drives, conveyor systems, etc. They are based on a needle roller bearing with a threaded solid stud instead of an inner ring. They have a thick-walled outer ring with a cylindrical running surface and are supplied sealed and ready-to-mount. The bearings can be relubricated via the stud.

- High radial load carrying capacity
- Accommodate axial loads due to skew or tilting
- Long service life
- Easy to mount
- Sealed for increased reliability, with relubrication feature



Overview

Dimensions

Functional outside diameter	22 mm
Stud diameter	10 mm
Length	36.2 mm
Width, outer ring	12 mm

Performance

Basic dynamic load rating	3.96 kN
Basic static load rating	5 kN
Limiting speed	5 000 r/min

Properties

Rolling elements	Needle rollers
Number of rows	1
Outer ring profile	Cylindrical
Stud alignment	Centric
Number of flanges, outer ring	2
Feature for tightening	Hexagonal recess
Cage	With
Radial internal clearance	Between C2 and CN
Tolerance class	Other
Material, bearing	Bearing steel

Coating	Without
Sealing	Seal on both sides
Sealing type	Contact
Lubricant	Grease
Relubrication feature	Centre of each stud end

Technical Specification



Dimensions

D	22 mm	Outside diameter
d	10 mm	Attachment diameter
B	36.2 mm	Total length
C	12 mm	Width outer ring
B ₁	23 mm	Length shank on stud
C ₁	0.6 mm	Distance face outer ring to face side washer
d ₁	17.1 mm	Outside diameter flange ring
G	M10x1	Thread stud
G ₁	12 mm	Length thread
M	3 mm	Seat diameter for lubrication accessories
SW	5 mm	Width across flats
r _{1,2}	min. 0.3 mm	Chamfer dimension

Calculation data

Basic dynamic load rating	C	3.96 kN
Basic static load rating	C ₀	5 kN
Fatigue load limit	P _u	0.56 kN
Maximum dynamic radial loads	F _r	max. 4.15 kN
Maximum static radial loads	F _{0r}	max. 6 kN
Limiting speed		5 000 r/min

Mass

Mass cam follower	0.043 kg
-------------------	----------

Mounting information

Recommended tightening torque

15 N·m

Included products

Grease fitting

NIP B1.3x4.5

Hexagonal nut

M 10x1

Terms and conditions

By accessing and using this website / app owned and published by AB SKF (publ.) (556007-3495 · Gothenburg) ("SKF"), you agree to the following terms and conditions:

Warranty Disclaimer and Limitation of Liability

Although every care has been taken to assure the accuracy of the information on this website / app, SKF provides this information "AS IS" and DISCLAIMS ALL WARRANTIES, EXPRESS OR IMPLIED, INCLUDING, BUT NOT LIMITED TO, IMPLIED WARRANTIES OF MERCHANTABILITY AND FITNESS FOR A PARTICULAR PURPOSE. You acknowledge that your use of this website / app is at your sole risk, that you assume full responsibility for all costs associated with use of this website / app, and that SKF shall not be liable for any direct, incidental, consequential, or indirect damages of any kind arising out of your access to, or use of the information or software made available on this website / app. Any warranties and representations in this website / app for SKF products or services that you purchase or use will be subject to the agreed upon terms and conditions in the contract for such product or service. Further, for non-SKF websites / apps that are referenced in our website / app or where a hyperlink appears, SKF makes no warranties concerning the accuracy or reliability of the information in these websites / apps and assumes no responsibility for material created or published by third parties contained therein. In addition, SKF does not warrant that this website / app or these other linked websites / apps are free from viruses or other harmful elements.

Third Party Services

When viewing YouTube content via the SKF website(s) (i.e. using YouTube API Services), you agree to be bound by the YouTube Terms of Service.

Copyright

Copyright in this website / app copyright of the information and software made available on this website / app rest with SKF or its licensors. All rights are reserved. All licensed material will reference the licensor that has granted SKF the right to use the material. The information and software made available on this website / app may not be reproduced, duplicated, copied, transferred, distributed, stored, modified, downloaded or otherwise exploited for any commercial use without the prior written approval of SKF. However, it may be reproduced, stored and downloaded for use by individuals without prior written approval of SKF. Under no circumstances may this information or software be supplied to third parties.

This website /app includes certain images used under license from Shutterstock, Inc.

Trademarks and Patents

All trademarks, brand names, and corporate logos displayed on the website / app are the property of SKF or its licensors, and may not be used in any way without prior written approval by SKF. All licensed trademarks published on this website / app reference the licensor that has granted SKF the right to use the trademark. Access to this website / app does not grant to the user any license under any patents owned by or licensed to SKF.

Changes

SKF reserves the right to make changes or additions to this website / app at any time.