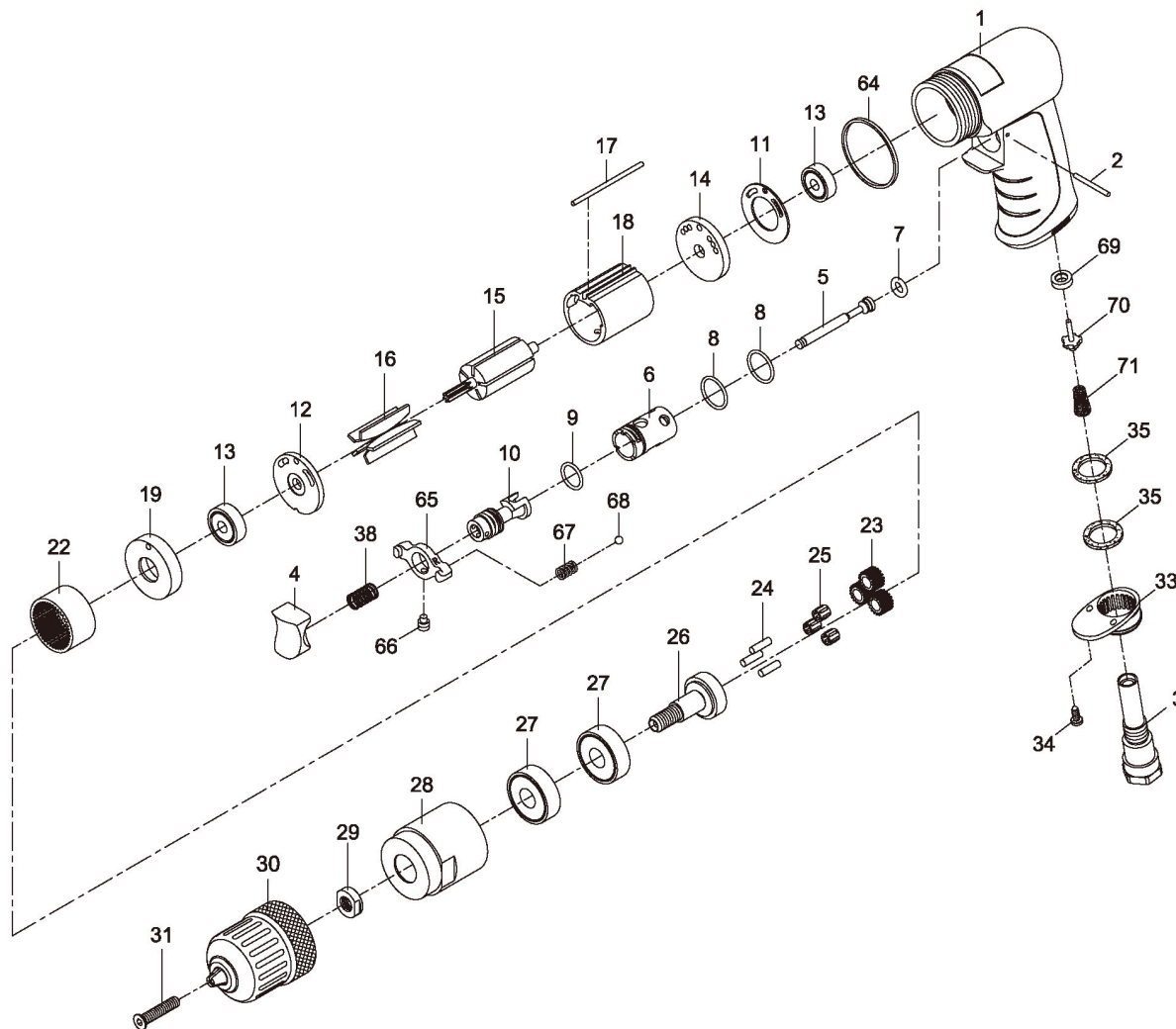


# RR-10DP

## 3/8" REVERSIBLE DRILL



Index No.	Parts No.	Description	Index No.	Parts No.	Description
1	75-7255P01	Motor Housing	24	30124	Pin (3) (4x13.8)
2	73102	Spring Pin (2x24L)	25	080245	Needle Bearing (3) (4x7x8)
3	75-725503	Air Inlet	26	70526	Work Spindle
4	75-725304	Trigger	27	080227	Ball Bearing (2) (6201z)
5	75-725505-12	Valve Stem	28	70534	Clamp Nut
6	75-725506	Reverse Bushing	29	72529	Washer
7	70107	O-Ring (4.8x1.9)	30	10035-14	Industrial Keyless Chuck (3/8")
8	795820	O-Ring (2) (15.5x1.5)	31	70530	Screw (M5x25)
9	80209	O-Ring (12x1.6)	33	70110-21	Exhaust Diffuser
10	74-796210	Reverse Valve	34	40309	Screw (2) (TS2.9)
11	80211	Motor Gasket	35	75-725350	Damping Material (2)
12	80214	End Plate	38	82208	Valve Spring
13	030113	Ball Bearing (2) (626zz)	64	75-725351	Decoration Ring
14	75-725314	Rear End Plate	65	75-725521	Reverse Lever
15	80215-12	Rotor	66	526328	Screw (M4x5)
16	80216	Rotor Blade (5)	67	78-728408	Spring
17	75-725317	Pin (2.5x57)	68	52245	Steel Ball (3/32")
18	80218-22	Cylinder	69	32-301207	Valve Seat
19	80219	Front End Plate	70	32-301210	Valve
22	80222	Internal Gear	71	32-301208	Spring
23	80223-14	Planet Gear (3)			

\* Optional Parts