

PRODUCT DATA SHEET



EPIC BLK LOW S3S FO SR

Art. No 64.704.0



- Protection:** composite-fiberglass toe cap and flexible FAP[®] midsole
- Plus:** cushioning idCell element integrated in the heel area
- Upper:** ballistic nylon, resistant to cleaning detergent, animal fat and acid
- Lining:** BreathActive functional lining
- Footbed:** evercushion[®] MAX
- Sole:** GRIPPAZ[®] Traction outsole with specially formulated rubber compound for excellent slip resistance
- Colour:** black
- Sizes:** 35 - 48

Also available:



BLAST ST BLK LOW
647020



SPARK ST BLK LOW
647060



COMPOSITE



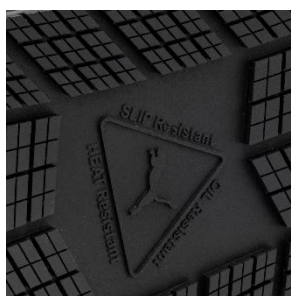
WATER RESISTANT



UNISEX



METAL FREE



GRIPPAZ[®] TRACTION OUTSOLE

Step confidently with GRIPPAZ[®] Traction Outsole Technology*. Formulated from a specially slip-resistant rubber Compound. It delivers excellent traction every step of the way.

*All shoes with GRIPPAZ[®] Traction significantly exceed the european EN 20347:2022 SR Standard



EVERCUSHION[®] MAX

Maximum comfort and a perfect fit thanks to the cushioning, breathable and moisture regulating evercushion[®] MAX footbed. The textile surface is not only non-slip, but also has an antibacterial HYPRO ODOR CONTROL treatment that reliably combats unpleasant odors. The foot receives perfect support from the longitudinal arch support. Pressure points are reduced and stress on feet, ankles and knees is minimized. Support you need for your best performance at work.



idCELL

The idCELL in the heel and forefoot area consists of a very soft shock-absorbing EVA material. It perfectly absorbs impacts and shocks when the heel strikes the ground.