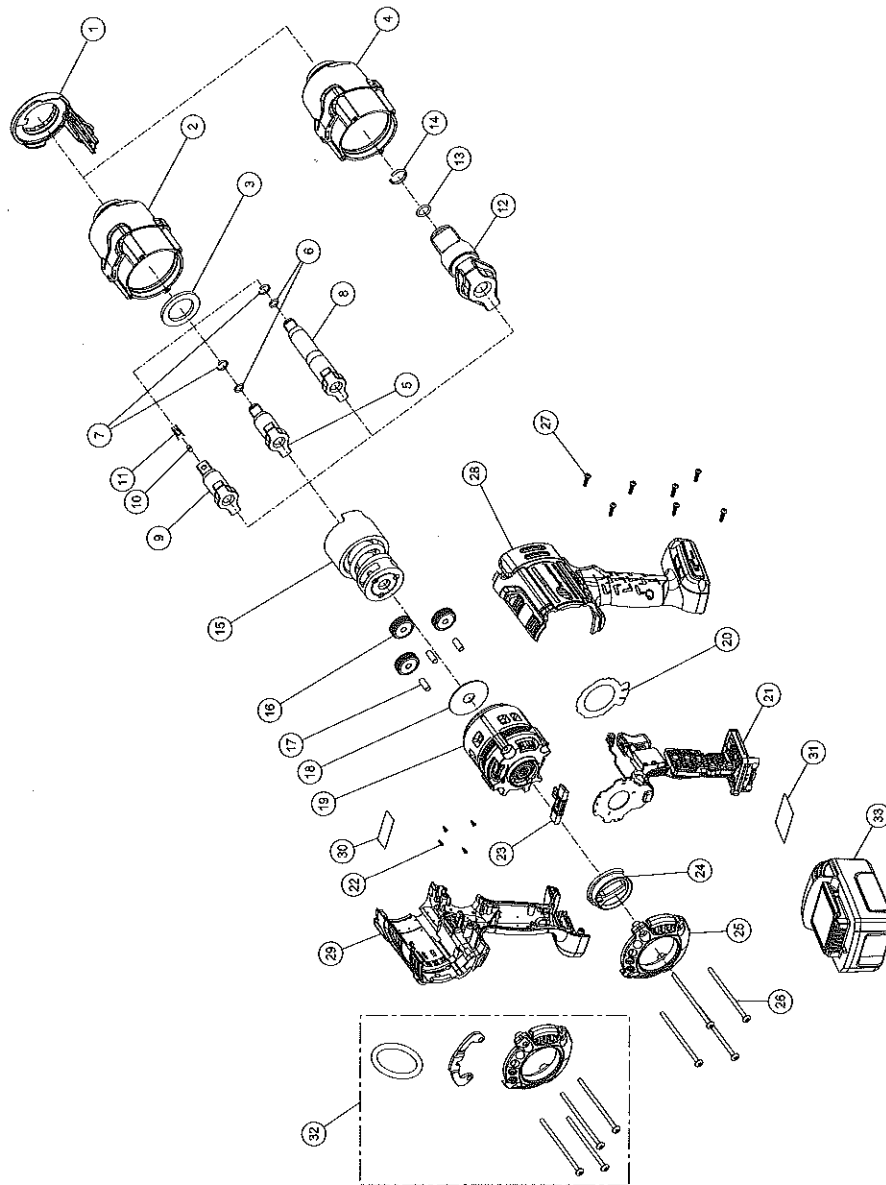


# W7002 Series: W7152, W7152P, W7172, and W7252 Cordless Impact Wrench

Figure 1. Exploded View (Dwg. 47621726)



**Table 1. W7152, W7152P, W7172, and W7252 Cordless Impact Wrench - Part List**

Item	Part Description	Part Number (CCN)	Item	Part Description	Part Number (CCN)
1	LED Kit	W7152-KLED (47631609001)		Anvil Kit for W7152	W7152-K626 (47631603001)
	Hammer Case Kit for W7152, W7152P and W7252	W7152-K727 (47631602001)	5	1/2"Anvil, Retaining Ring	—
1	LED Assembly	—	6	O-Ring	—
2	Hammer Case Assembly	—	7	Retaining Ring	—
3	Washer	—		Anvil Kit for W7252	W7252-K626 (47633585001)
	Hammer Case Kit for W7172	W7172-K727 (47663576001)	8	1/2"Anvil, 2" Extended	—
1	LED Assembly	—	6	O-Ring	—
4	Hammer Case Assembly	—	7	Retaining Ring	—

**Table 1. W7152, W7152P, W7172, and W7252 Cordless Impact Wrench - Part List (continued)**

Item	Part Description	Part Number (CCN)	Item	Part Description	Part Number (CCN)
	Anvil Kit for W7152P	W7152P-K626 (47631604001)		Fastener Kit	W7152-K105 (47631614001)
9	1/2"Anvil, Pin	—	22	Screw, Hall PCBA (QTY. 4)	—
10	Retaining Pin	—	26	Screw, Hammercase (QTY. 4)	—
11	Spring	—	27	Screw, Housing (QTY. 7)	—
	Anvil Kit for W7172	W7172-K626 (47663577001)		Housing Kit	W7152-K40 (47631612001)
12	3/4" Anvil	—	28	Left Housing	—
13	O-Ring	—	29	Right Housing	—
14	Retaining Ring	—	30	Warning Label	—
	Socket Retainer Kit for W7152 and W7252	2125QTI-K425 (80107733)	27	Screw, Housing (QTY. 7)	—
6	O-Ring	—		Label Kit	W7152-K99 (47631615001)
7	Retaining Ring	—	30	Warning Label	—
	Socket Retainer Kit for W7152P	2125PTI-K425 (80107725)	31	Information Label	—
10	Retaining Pin	—	32	Hanger Kit	W7152-K365B (47632290001)
11	Spring	—		Backcap	—
	Socket Retainer Kit for W7172	2145-K425 (47118112)		Screw, Hammercase (QTY. 2)	—
13	O-Ring	—		Screw, Long Hammercase (QTY. 2)	—
14	Retaining Ring	—		Ring	—
15	Impact Mechanism Kit	W7152-K724 (47631605001)		Bracket	—
	Gear Kit	W7152-K37 (47631606001)	33	Battery, BL2022	BL2022 (47515902001)
16	Planet Gear (QTY. 3)	—	(a)	Battery Charger	BC1121 (47507879001)
17	Gear Pin (QTY. 3)	—	(a)	Protective Tool Boot	W7152-BOOT (47621732001)
18	Cam Thrust Washer	—	(a)	Power Regulator Restricted Tool Boot	W7152-BOOTX (47621734001)
19	Brushless Motor Kit	W7152-K54 (47631607001)	(a)	Protective Battery Boot	BL2010-BOOT (47510964001)
20	Insulator Sheet Kit	W7152-K624 (47633589001)	(a)	Tool Bag	TB4 (47543666001)
	Drive Kit	W7152-K93 (47631611001)	(a)	Grease	
21	Drive Assembly	—		IR #105 (1 LB Can)	105 1 LB (04279147)
31	Information Label	—		IR #105 (8 LB Can)	105 8 LB (04264875)
23	Directional Switch Kit	W7152-K75 (47631610001)		IR #67 (1 LB Can)	67 1 LB (03773009)
24	Regulator Kit	W7152-K249 (47631608001)		IR #67 (8 LB Can)	67 8 LB (03820008)
25	Backcap Kit	W7152-K40B (476316130001)	(a)	Grease Gun	R000A2-228 (03095015)

(a) Indicates Not Illustrated.

## Parts and Maintenance

When tool life has expired, it is recommended that the tool be disassembled, degreased and parts separated by material for proper recycling. Tool repair and maintenance should only be carried out by an authorized Service Center. Refer all communications to the nearest **Ingersoll Rand** office or distributor.

## Related Documentation

Manuals can be downloaded from [ingersollrandproducts.com](http://ingersollrandproducts.com)

For additional information, refer to:

Product Safety Information Manual 04581146.

Product Information Manual 47621725001.

Declaration of Conformity 47589598001.

Hanger Install / Removal Instruction Card 47641906001 and 47642459001.