



IQ^{V20} Impactool™
W7170 3/4"



REAL TOOLS FOR REAL WORK.™

BORN FROM A LEGEND.

W7170 3/4" 20V Impactool™

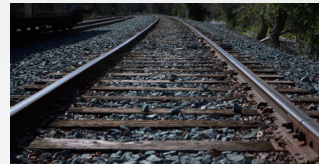
The Ingersoll Rand W7170 Series Cordless Impactool™ was built on the hardworking and respected foundation laid by the W7150. The result is a light, quiet and powerful impact wrench that professional technicians will come to rely on in the field. Ingersoll Rand IQ^{V20} Series™ cordless tools are specifically designed for vehicle services, industrial maintenance and manufacturing applications. The W7170 3/4" Impactool™ makes quick work of tough jobs that the professional technician does every day — something that until now, only an air tool could do.



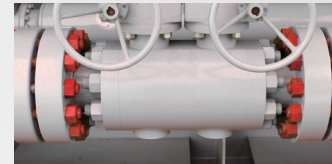
Heavy Vehicle



Industrial Equipment



Railway Maintenance



Facility Repair

Tool Features

POWER

All-metal drivetrain and hammer mechanism — robust, durable, and optimized for maximum power and efficiency.

DURABILITY

Variable speed brakeless switch — provides maximum control of the tool.
Drop-resistant, steel-reinforced frame protects against breakage.



COMFORT

Patent-pending soft touch over-molded grip — minimizes vibration, reduces fatigue, and enhances user comfort during extended use. Best-in-class power-to-weight ratio — 780 ft-lb reverse torque and 1100 ft-lb nut-busting torque from a 7.2 lbs tool/battery combo.

Specs

IQ^{V20} Series™ W7170 Cordless Impactool™

Model	Battery	Voltage DC	Drive Size, Type	MAX Torque ft.-lb. (Nm)	Nut-Busting Torque ft.-lb. (Nm)	Tool & Battery	
						Weight lb (kg)	Length in. (mm)
W7170	BL2022	20	3/4", Square Socket Retaining Ring	780 (1057)	1100 (1490)	7.22 (3.28)	10.08 (256)



The W7170 is also available in a kit.

Item No.	Kit Details
W7170-K22	Tool, Universal Charger, 2 5.0 Ah Batteries, Case

IQ^V Series WARRANTY

IQ^V Series Includes IQ^{V20} and IQ^{V15}

3 Year <small>Unlimited Warranty on Tools and Chargers</small>	2 Year <small>High-Capacity Battery Performance</small>	1 Year <small>Tool, Battery & Charger Replacement</small>
--	---	---

See ingersollrandproducts.com/careline for official Terms & Conditions. May vary by country.



www.ingersollrandproducts.com
REAL TOOLS FOR REAL WORK.™

Ingersoll Rand (NYSE:IR) advances the quality of life by creating comfortable, sustainable and efficient environments. Our people and our family of brands — including Club Car®, Ingersoll Rand®, Thermo King® and Trane® — work together to enhance the quality and comfort of air in homes and buildings; transport and protect food and perishables; and increase industrial productivity and efficiency. We are a \$12 billion global business committed to a world of sustainable progress and enduring results.