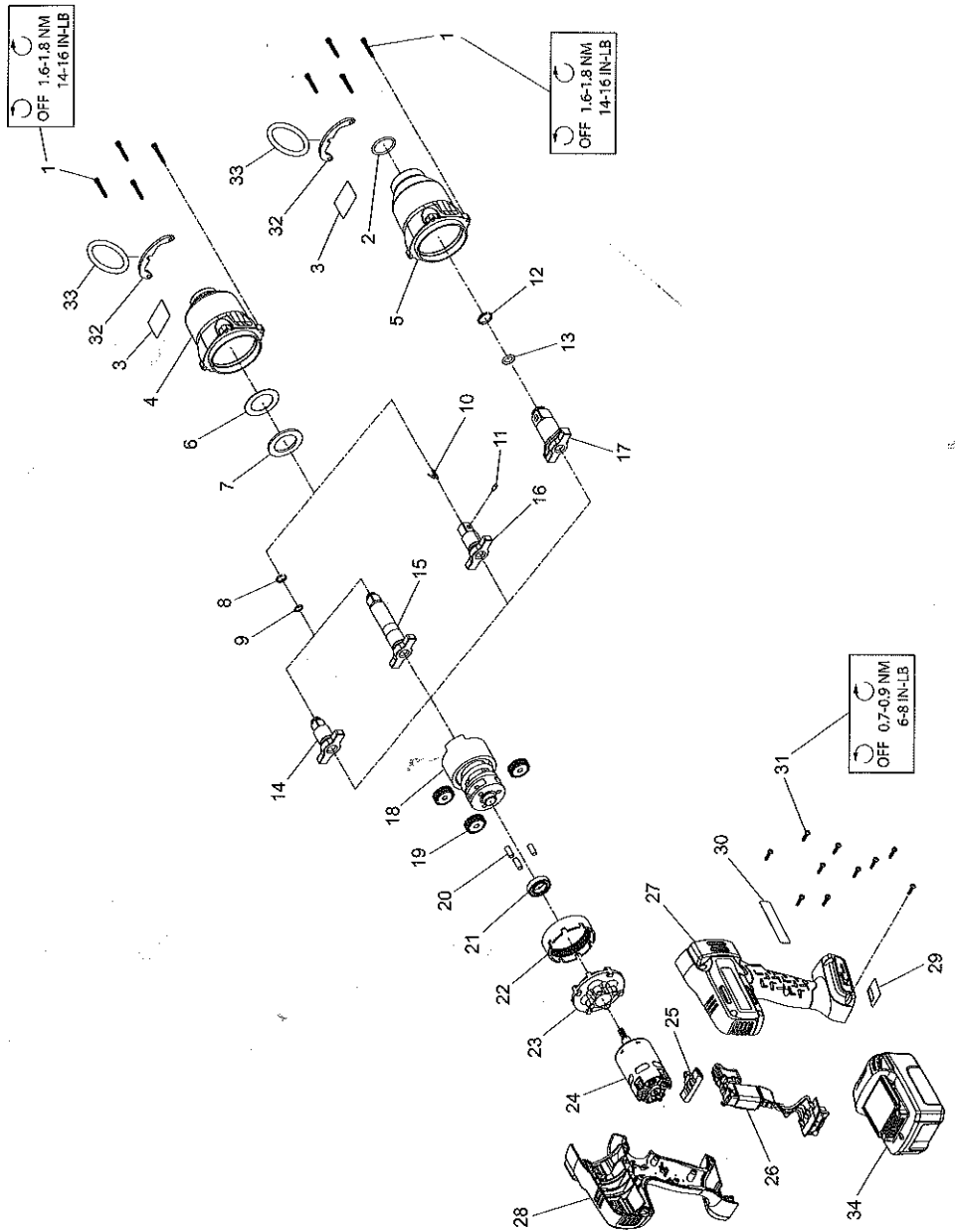


W7150, W7150EU, W7150P, W7150EU-P, W7170, W7170EU, W7250 and W7250EU Cordless impact Wrench - Exploded View



(Dwg. 48380281)



W7150, W7150EU, W7150P, W7150EU-P, W7170, W7170EU, W7250 and W7250EU Cordless Impact Wrench - Parts List

Item	Part Description	Part Number	(CCN)	Item	Part Description	Part Number	(CCN)
	Hammer Case Kit for W7150, W7150EU, W7150P, W7150EU-P, W7250, W7250EU	W7150-K727	(48391494)		Electric Motor Kit	--	--
1	Screw, Hammer Case (4 Required)	--	--	24	for W7150, W7150P, W7250, W7170	W7150-K54	(48401772)
3	Warning Label	--	--		for W7150EU, W7150EU-P, W7250EU, W7170EU	W7150EU-K54	(48401780)
4	Hammer Case Assembly	--	--	25	Forward/Reverse Actuator	W7150-K75	(48391312)
6	Washer, Rubber	--	--		Trigger & Battery Connector Kit	--	--
7	Washer, Steel	--	--		for W7150, W7150P, W7250 with Brake	W7150-K93	(48401806)
	Hammer Case Kit for W7170, W7170EU	W7170-K727	(47610389001)		for W7150, W7150P, W7250, W7170 without Brake	W7150-K93NB	(47517641001)
1	Screw, Hammer Case (4 Required)	--	--	26	for W7150EU, W7150EU-P, W7250EU with Brake	W7150EU-K93	(48401814)
2	O-Ring	W7170-K160	(47610390001)		for W7150EU, W7150EU-P, W7250EU, W7170EU without Brake	W7150EU-K93NB	(47517642001)
3	Warning Label	--	--		Housing Kit	W7150-K40	(48391320)
5	Hammer Case Assembly	--	--	27	Right Housing	--	--
	Socket Retainer Kit for W7150, W7150EU, W7250, W7250EU	2125QTI-K425	(80107733)	28	Left Housing	--	--
8	Socket Retainer Ring	--	--	29	Serial Number Label	--	--
9	O-Ring	--	--	30	Information Label	--	--
	Socket Retainer Kit for W7150P, W7150EU-P	2125PTI-K425	(80107725)	31	Screw, Housing (10 Required)	--	--
10	Spring	--	--		Fastener Kit	W7150-K105	(48391379)
11	Socket Retainer Pin	--	--	1	Screw, Hammer Case (4 Required)	--	--
	Socket Retainer Kit for W7170, W7170EU	2145-K425	(47118112)	31	Screw, Housing (10 Required)	--	--
12	Socket Retainer Ring	--	--		Label Kit	W7150-K99	(48391387)
13	O-Ring	--	--	3	Warning Label	--	--
	Anvil Kit for W7150, W7150EU	W7150-K626	(48401756)	29	Serial Number Label	--	--
14	Anvil 1/2-in SQ Drive, Retaining Ring	--	--	30	Information Label	--	--
8	Socket Retainer Ring	--	--		Bracket Kit	W7150-K365	(47518084001)
9	O-Ring	--	--	32	Bracket	--	--
	Anvil Kit for W7250, W7250EU	W7250-K414	(48401764)	33	Ring	--	--
15	Anvil 1/2-in SQ Drive, 2-in Extended	--	--		* Protective Tool Boot	W7150-BOOT	(48401855)
8	Socket Retainer Ring	--	--		* Grease	--	--
9	O-Ring	--	--		* IR #105 (1 lb can) for Impact Mechanism and Anvil	105-1LB	(04279147)
	Anvil Kit for W7150P, W7150EU-P	W7150P-K726	(47518085001)		* IR #105 (8 lb can) for Impact Mechanism and Anvil	105-8LB	(04264875)
16	Anvil 1/2-In SQ Drive, Retaining Pin	--	--		* IR #67 (1 lb can) for Gearing	67-1LB	(03773009)
10	Spring	--	--		* IR #67 (8 lb can) for Gearing	67-8LB	(03820008)
11	Socket Retainer Pin	--	--		* Grease Gun	RO00A2-228	(03095015)
	Anvil Kit for W7170, W7170EU	W7170-K626	(47610391001)		20V Li-Ion Battery Pack	--	--
17	Anvil 3/4-in SQ Drive, Retaining Ring	--	--		for 3.0 Ah	BL2010	(48386791)
12	Socket Retainer Ring	--	--	34	for 5.0 Ah	BL2022	(47515902001)
13	O-Ring	--	--		* Protective Battery Boot for BL2010, BL2022	BL2010-BOOT	(47510964001)
18	Impact Mechanism Kit	W7150-K724	(48391536)		* Battery Charger	BC1121	(47507879001)
	Planetary Gear Kit	W7150-K37	(48391429)		* Carrying Case	W7170-CASE	(47607368001)
19	Planet Gear (3 Required)	--	--		* Carrying Case Latch	W7000-LATCH	(47507275001)
20	Pin (3 Required)	--	--				
21	Bearing, Gear Carrier	--	--				
22	Ring Gear	--	--				
23	Ring Gear Holder	--	--				

* Indicates not illustrated

Parts and Maintenance

When tool life has expired, it is recommended that the tool be disassembled, degreased and parts separated by material for proper recycling. Tool repair and maintenance should only be carried out by an authorized Service Center. Refer all communications to the nearest **Ingersoll Rand** office or distributor.

Related Documentation

Manuals can be downloaded from ingersollrandproducts.com.

For additional information, refer to:

Product Safety Information Manual 04581146.

Product Information Manual 47610392001 (for models W7150/W7150P/W7170/W7250).

Product Information Manual 47610393001 (for models W7150EU/W7150EU-P/W7170EU/W7250EU).



ingersollrandproducts.com
© 2017 Ingersoll Rand

47610397001
Edition 1
August 2017