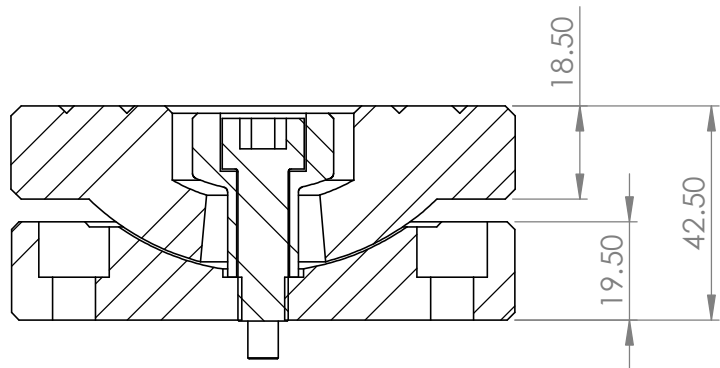
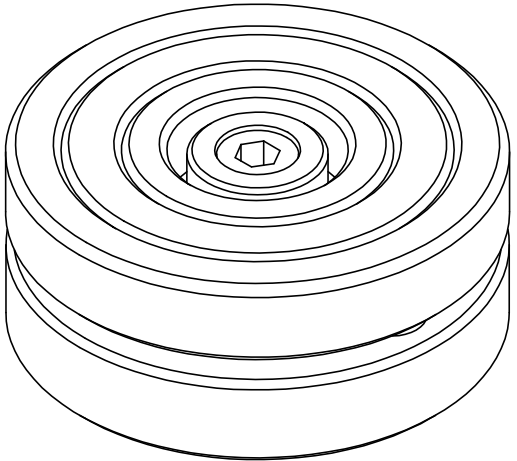
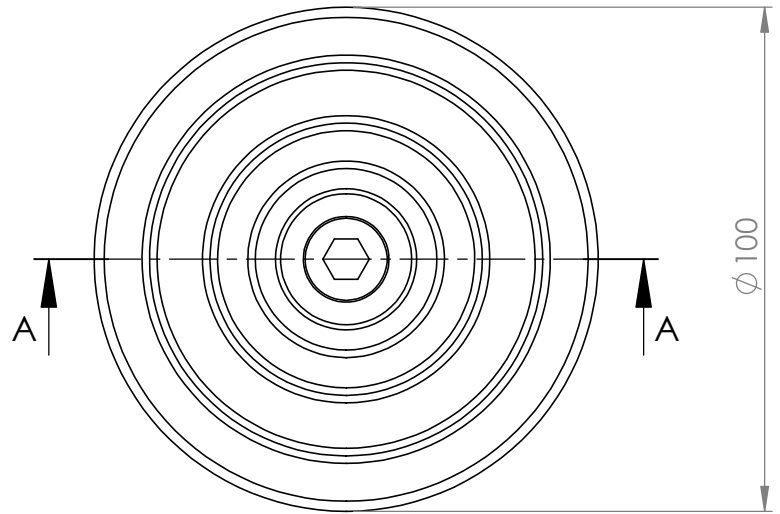


DRAWING CHANGE

1	2	3	4	5	6	7	8	9	10	11	12
13	14	15	16	17	18	19	20	21	22	23	24

INC REV. DRAWINGS AT REVISION #.# ARE VALID FOR USE WITH DOCUMENTATION FOR REVISION #



SECTION A-A
SCALE 1 : 1.5

Hi-Force
HYDRAULIC TOOLS
PROSPECT WAY, DAVENTRY
NORTHANTS. NN11 8PL

TITLE:
HAT100
THIS DRAWING IS THE SOLE PROPERTY OF HI-FORCE LTD.
AND MUST NOT BE LOANED, COPIED OR
USED IN ANY WAY WITHOUT THE WRITTEN CONSENT OF THE Co.

DRAWN	MM
DATE	15/12/2016
CHKD	

MATERIAL:

FINISH:

REMARKS

UNLESS SPECIFIED
OTHERWISE, M/C FINISH
Ra 1.6 μ m

DO NOT SCALE
ALL DIMS ARE IN mm AND INCLUDE ANY
SURFACE TREATMENTS.
TOLERANCES (UNLESS SPECIFIED OTHERWISE):
LINEAR DIMS ± 0.25
ANGULAR DIMS $\pm 0.5^\circ$
COAXIAL DIAMS TO BE CONCENTRIC TO WITHIN
0.05 T.I.R. REMOVE ALL BURRS AND SHARP EDGES

COMPONENT DRG NO.
HAT100
SHT 1 OF 1 SHTS